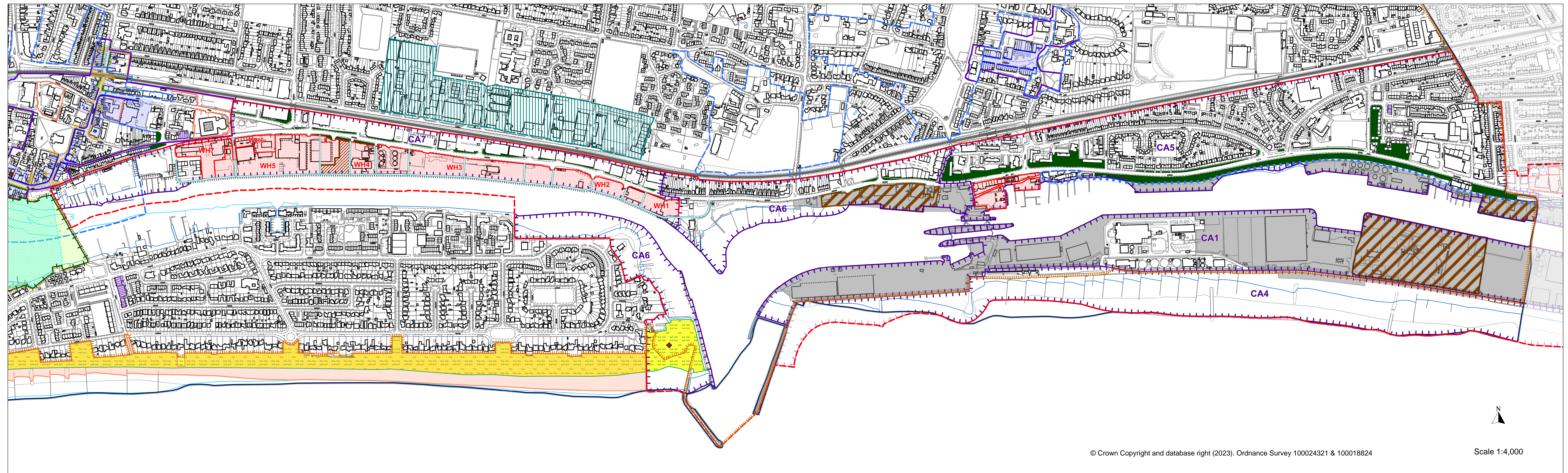


# Adur Policies Map 2023 - Adur Local Plan and Shoreham Harbour Joint Area Action Plan

## Inset Map 4: Shoreham Harbour Regeneration Area

Inset Map 4. Shoreham Harbour Regeneration Area



© Crown Copyright and database right (2023). Ordnance Survey 100024321 & 100018824

Scale 1:4,000

### Legend

- |                                                                                                    |                                                                                     |
|----------------------------------------------------------------------------------------------------|-------------------------------------------------------------------------------------|
| Adur Local Plan (ALP) Area                                                                         | Site of Special Scientific Interest (SSSI) - ALP Policy 31                          |
| Built Up Area (BUA) - ALP Policy 2                                                                 | Local Nature Reserve (LNR) - ALP Policy 31                                          |
| Local Green Gap - ALP Policy 14                                                                    | Local Wildlife Site (LWS) - ALP Policy 31                                           |
| Countryside                                                                                        | Conservation Areas - ALP Policies 16, 17                                            |
| Shoreham Harbour Regeneration Area (Broad Location) - ALP Policy 8                                 | Scheduled Ancient Monuments - ALP Policies 16, 17                                   |
| Character Area (Shoreham Harbour) (Numbered) - ALP Policy 8, JAAP Policies CA1, CA4, CA5, CA6, CA7 | Protected Employment Sites - ALP Policy 25                                          |
| Site Allocations (Shoreham Harbour) (Numbered) - JAAP Policies SH3, SH4, CA5, CA7                  | Town Centre Boundaries - ALP Policy 27                                              |
| Port (Operational) - JAAP Policies SH2, CA1, CA5, CA6                                              | Primary Shopping Area - ALP Policy 27                                               |
| Safeguarded Wharves - WSMP Policy M10                                                              | Town Centre Blocks (Numbered) - ALP Policies 9, 11                                  |
| Temporary Safeguarded Wharves - WSMP Policy M10                                                    | Primary Retail Frontages - ALP Policies 9, 11, 12, 27                               |
| New / Upgraded Port Access Road - JAAP Policy CA5                                                  | Secondary Retail Frontages - ALP Policies 9, 11, 27                                 |
| New Waterfront Route - JAAP Policies SH6, CA7                                                      | Potential Development Sites (in or on edge of Shoreham Town Centre) - ALP Policy 11 |
| New / Upgraded Flood Defences - JAAP Policies SH6, CA7                                             | Local Shopping Parades - ALP Policy 27                                              |
| Green Corridor - JAAP Policies SH7, SH8, CA5                                                       |                                                                                     |